

# CHELSEA® 878 SERIES

## Constant Mesh 10-Bolt PTO for Allison 3000/4000 Family Transmissions

Our 878 Series PTO is an improvement on the design of our bulletproof 877 Series PTO. Chelsea's 878 Series features a ductile iron bearing cap which is 117% stronger than its predecessor. It also features an o-ring sealing configuration between the housing and bearing cap to improve clamp load. All of these improvements are focused on reducing the damaging vibrational effects caused by today's and future engine designs.

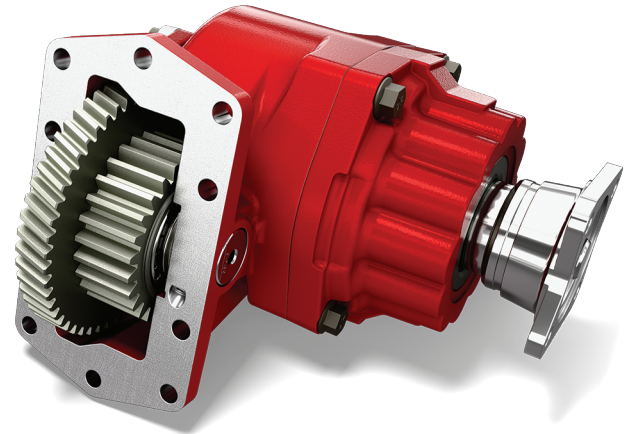
With durability in mind, our 878 Series PTO is offered with Wet Spline technology as an option to increase the life of both the PTO and its pump shaft. This PTO boasts an impressive 670 lb-ft torque rating in both intermittent and continuous use applications.

### Applications:

- Snow and Ice Trucks
- Vacuum Trucks
- Aerial Trucks
- Refuse Trucks

### Product Features and Benefits:

- Ductile Iron Bearing Cap – 117% stronger than gray iron.
- Improved Seal – O-ring sealing configuration to reduce vibrational effects and improve clamp load.
- Torque – Features a single, continuous duty torque rating.
- Constant Mesh – Economical workhorse features a cast iron housing.
- Clearance – Interference issues have been reduced with rotatable, cast iron flanges.
- Positive Stop – Driveline outputs; eliminates oil seal damage from coupling.
- Protection – Wet Spline Lubrication option provides 7 to 10 times greater shaft life.
- Speeds – Multiple speed ratios including low and high speeds.
- Hose Included – No need to order separately.

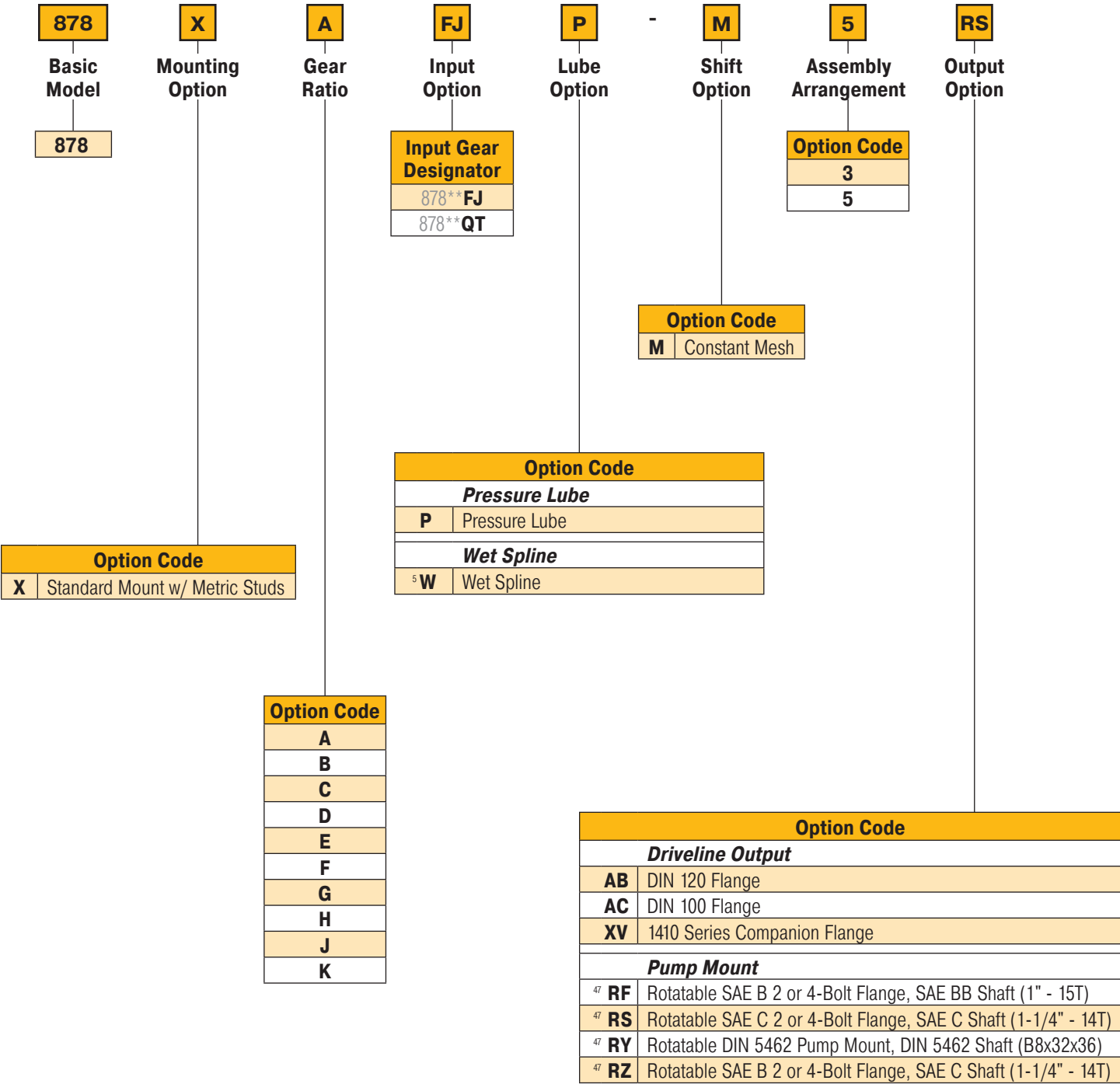


878 Series



878 Series Power Take-Off – Allison

Model Number Designator

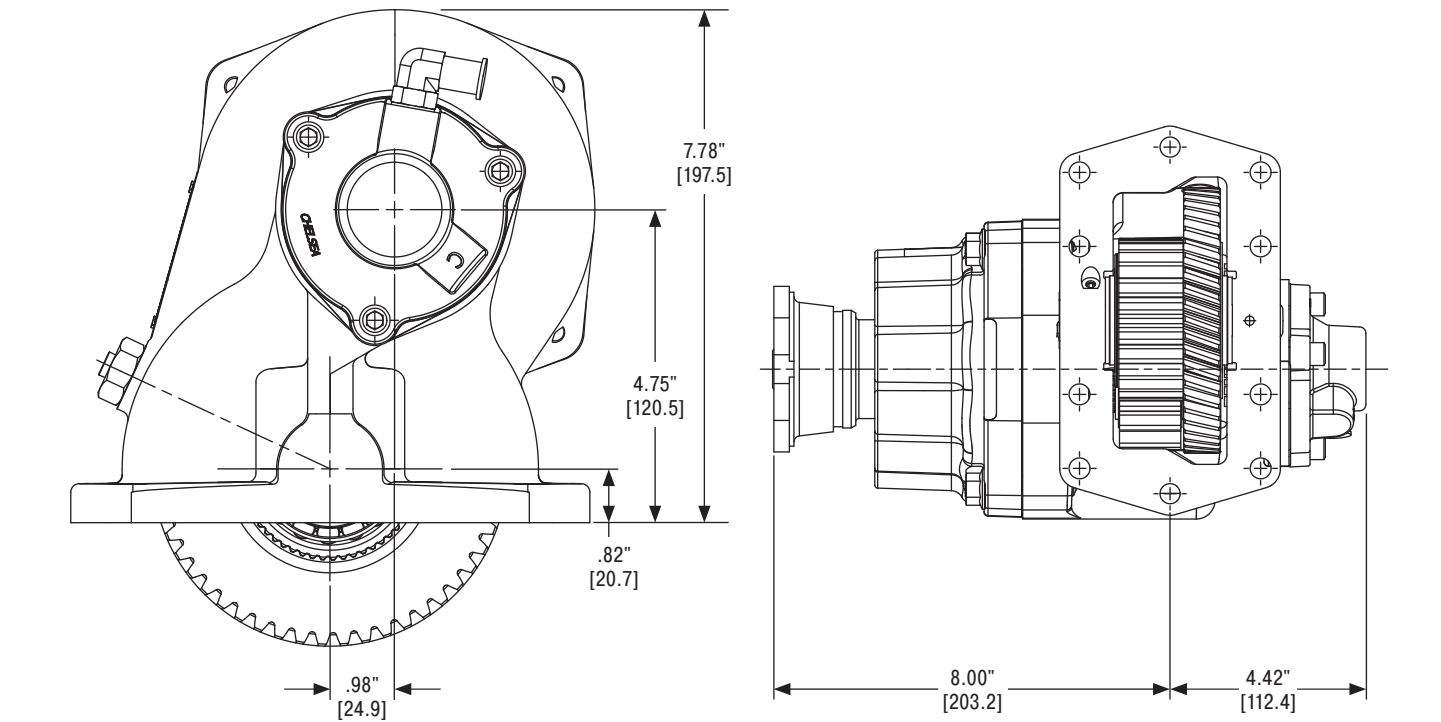


<sup>5</sup> Automatically pressure lubed

<sup>47</sup> Available with Wet Spline

878 Series Power Take-Off – Allison

Dimensions & Specifications – For PTO output information see application catalog



Specifications Chart	Approximate Weight: 56 lbs. [25 kg]									
	878*A	878*B	878*C	878*D	878*E	878*F	878*K	878*G	878*H	878*J
Continuous Torque Rating lb-ft [N-m]	670 [909]	630 [854]	590 [800]	550 [746]	485 [658]	430 [583]	404 [548]	380 [515]	355 [481]	335 [454]
HP Rating for Continuous Service										
At 500 RPM of Output Shaft HP [kW]	64 [48]	60 [45]	56 [42]	52 [39]	46 [34]	41 [31]	38 [29]	36 [27]	34 [25]	32 [24]
At 1000 RPM of Output Shaft HP [kW]	128 [95]	120 [89]	112 [84]	105 [78]	92 [69]	82 [61]	77 [57]	72 [54]	68 [50]	64 [48]

Parker Hannifin Corporation

**Chelsea Products Division**

8225 Hacks Cross Road

Olive Branch, MS 38654 USA

phone 1-888-PH4-TRUK (1-888-744-8785)

chd\_support@support.parker.com

www.parker.com/chelsea

HY25-0211-B1/US
November 2025

© 2025 Parker Hannifin Corporation

